

PART OF THE SE.1/4, SEC. 34, T.6N., R.1W., S.L.B. & M.  
**EAST BENCH AT 29TH**

IN OGDEN CITY  
 SCALE 1" = 60'

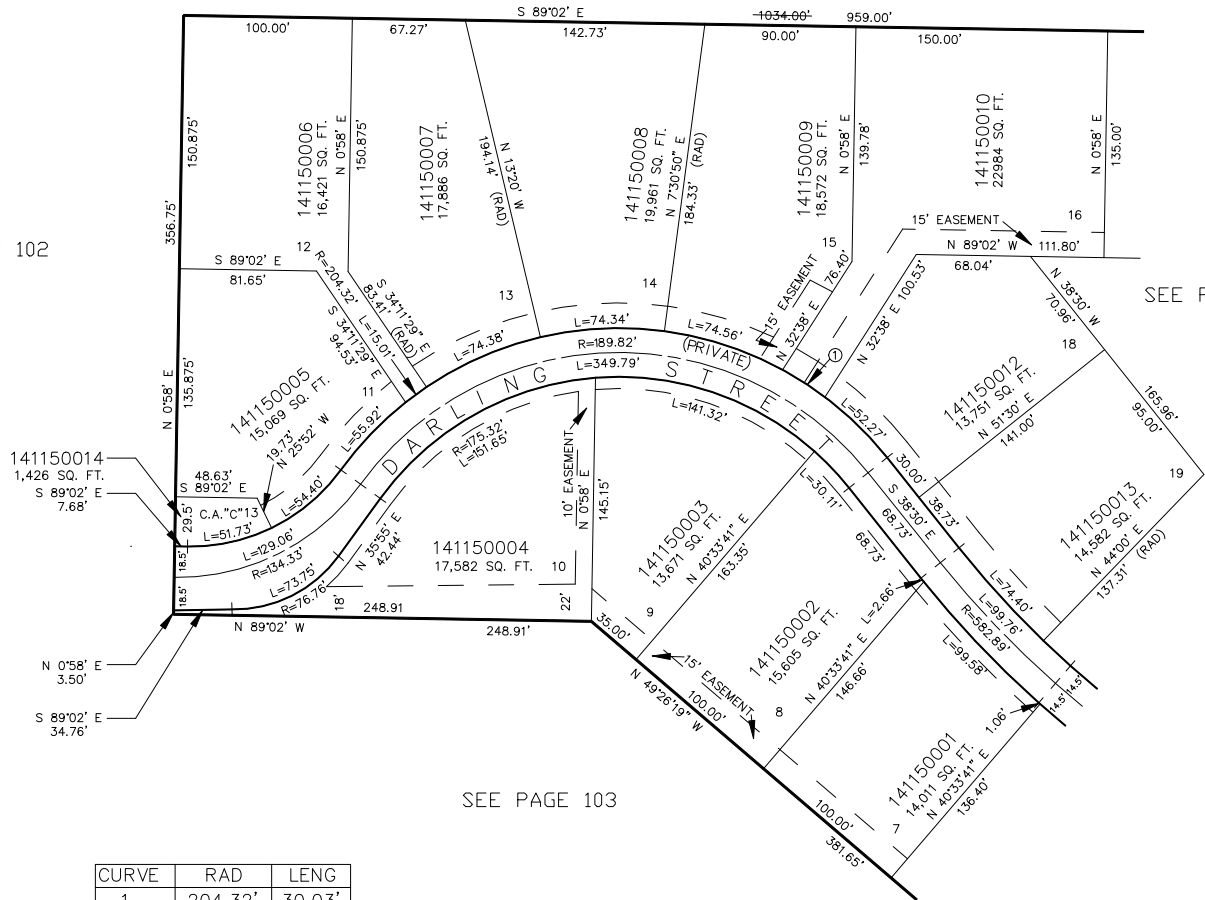
TAXING UNIT: 183

SEE PAGE 96

29TH STREET

SEE PAGE 102

SEE PAGE 114



SEE PAGE 103

7' UTILITY & DRAINAGE EASEMENTS EACH  
 SIDE OF PROPERTY LINES AS INDICATED  
 BY DASHED LINES EXCEPT AS OTHERWISE  
 SHOWN.

AMD. LOTS 16,17,26 SEE  
 DEDICATION PLAT IN  
 BOOK 42, PAGE 27 OF RECORDS.

FOR COMPLETE ENG DATA SEE  
 ORIGINAL DEDICATION PLAT IN  
 BOOK 25, PAGE 35 OF RECORDS.

LOTS 1-4 AMENDED. SEE  
 DEDICATION PLAT IN  
 BOOK 29, PAGE 99 OF RECORDS.

LOT 16 AMENDED. SEE  
 DEDICATION PLAT IN  
 BOOK 38, PAGE 61 OF RECORDS.